

Camp de Benneville Pines

Connection

Fall 2007/Winter 2008

Your Unitarian Universalist Mountain Retreat

AmeriCorps Team Lends a Helping Hand at Camp

by Erin Knudtson, Blue 5 Team Leader

On May 14, 2007, the Blue 5 AmeriCorps - National Civilian Community Corps team arrived at Camp de Benneville Pines. During the final project of their contract, the 10-member team helped out the camp for nine weeks.

By the time Blue 5 returned to their Sacramento base on July 10, the team had created defensible space around the cabins by raking and removing truck-loads of pine needles, piling and chipping dry brush, and removing dead and dying branches from tinder dry trees. They spent several days chipping the seven foot tall piles of brush in the parking lot, remnants of the Forest Service tree trimmers. The chipping left us fragrant piles of chips to be used in the gardens and on walkways around camp.

The team also helped with various maintenance projects around the facility. They

built new storage and fire hose sheds, erected 3 new flagpoles at the Fire Circle and set the foundation for a new playground structure.

The young adults of Blue 5 Team came together in September 2006 in Sacramento, CA, for a 10-month journey of national and community service. Recruited from around the country, they received basic First Aid, CPR and Red Cross shelter setup training, then departed to the Gulf Coast to begin their service.

Coming from a variety of backgrounds, some of the team had completed college and were putting together scholarship and tuition money for graduate school. Others hadn't yet started college and were taking a year to see the country and get life experience before beginning school. They came to the team with a diversity of skills and experience.

Their first project took them to Ocean Springs, Mississippi. At Camp Victor, a volunteer center, the team was responsible for completing a variety of tasks, such as home renovation, case work and food distribution. After completing this seven-week project, the team received a two week vacation for the winter holidays.

Gray, Louisiana was the



AmeriCorps Blue Team 5 at de Benneville

location of their second project. The team worked for the Bayou Area Habitat for Humanity preparing homes funded by Oprah's Angel Network and Bon Jovi. There the team lived in a house equipped with bunks and a full kitchen....luxury after Camp Victor's accommodations. Helping to build homes for seven weeks, the team was proud that they had incurred only one injury during that time.

By mid March, the team was headed for Pass Christian, Mississippi. Divided into two groups, part of the team worked for the City of Pass Christian and the other, the City of Waveland. Then their original project fell through and Blue 5 was relocated to Fairhope,

Continued on page 6



Chipping the piles in our parking lot

Contents

AmeriCorps Team Helps at Camp	1	Pre-Registration Womens Retreat 2008	7
Calendar of Events	2	Meet Sally Carliss	7
Charitable Contributions	3	The Spirit of de Benneville Pines	7
DBP Donation Form	3	Event Information	8, 9, 10, 11, 12, 13, 14
Two Volunteers	4	Registration Forms	15
Some Places You Don't Take a Bus	5	Connection Subscription Info	16
Art is Alive in the Forest	5	Contact Information	16



Camp de Benneville Pines

Calendar of Events 2007-2008

September 2007

- 8/31-3 **Labor Day Weekend Retreat**
See advertisement on page 8 for additional info
- 7-9 **Yoga & Meditation Retreat**
See advertisement on page 8 for additional info
- 10 -12 **New City School** (Private)
- 14-16 **12-Step Fall Mountain Retreat**
See advertisement on page 8 for additional info
- 21-23 **Camp Getaway for Mothers & Others**
See advertisement on page 9 for additional info
- 24-27 **Odyssey Charter School** (Private)
- 28-30 **Conejo Valley/Orange Coast UU Congregational Retreat**
For info, contact (805) 492-8751, www.cvuuf.org
or (949) 646-4652, uu@ocuuc.org

October 2007

- 1-5 **Camp Bravo/La Jolla Country Day School** (Private)
- 5-7 **LA-Valley Cluster UU Congregational Retreat**
See advertisement on page 9 for additional info
- 12-14 **Tapestry/Riverside UU Congregational Retreat**
For info, contact (949) 581-0245 or admin@tapestryuu.org
- 16 **Diamond Bar High School** (Private)
- 19-21 **Women Together** (Private)
- 22 - 25 **Camp for Homeschooling Families**
See advertisement on page 10 for additional info
- 25-26 **PSWD Workshop for New DREs**
- 26-28 **PSWD Renaissance Module - RE Administration Work Weekend**
See advertisement on page 10 for additional info
See advertisement on page 11 for additional info

November 2007

- 2-4 **Music in the Mountains Folk Music Weekend**
See advertisement on page 11 for additional info
- 9-11 **Chalice/Fullerton UU Congregational Retreat**
For info, contact (760) 737-0393, office@chaliceuu.org
or (714) 871-7150, www.uufullerton.org
- 16-18 **Rainbow Family Camp**
See advertisement on page 12 for additional info
- 22-25 **Thanksgiving Holiday Celebration**
See advertisement on page 12 for additional info

December 2007

- 11/30-2 **PSWD Jr High Fall Camp & Coming of Age Retreat**
See advertisement on page 13 for additional info
- 7-9 **Hi-Desert UU (Emergent) Congregation Retreat** (Private) - Craig's
Camp Available for Lease
- 27-1/1 **PSWD/YRUU Sr High Winter Camp**
See advertisement on page 13 for additional info

Registration information for any of the retreats listed may be obtained by calling the camp office at (909) 794-2928, e-mailing caroline@uucamp.org, or from the camp's website at www.uucamp.org. Most event details can be found in this newsletter. For registration forms, see page 15.

January 2008

- 4-6 **UC Riverside GLBT Center** (Private) - Craig's & Cabin 6
Camp Available for Lease
- 11-13 **Peninsula Neighborhood Girl Scout Snow Camp** (Private)
Craig's Cabin Available for Lease
- 17-21 **Society for Creative Anachronism** (Private)
- 25-27 **USC Scholars** (Private)

February 2008

- 1-3 **Peninsula Neighborhood Girl Scout Snow Camp** (Private)
- Santa Monica UU Family Support Group** (Private) - Craig's
- 8-10 **Neighborhood UU Congregational Retreat**
For info, contact (626) 449-3470 or information@uuneighborhood.org
- 16-18 **PSWD Elementary Winter Camp**
See advertisement on page 14 for additional info
- 22-24 **Riverside YMCA, Cherokee Nation** (Private)

March 2008

- 2/29-2 **Long Beach UU Congregational Retreat**
For info, contact (562) 597-8445 or office@uucb.org
- 7-9 **South Coast YMCA Sunshine Nation** (Private)
- 14-16 **Girl Scout SongSwap Weekend w/Leader Training Workshop**
See advertisement on page 14 for additional info
- Conejo Valley UU RE Retreat** (Private) - Craig's
Camp Available for Lease (Easter Weekend)
- 21-23 **Rainbow Family Camp**
For info, contact (323) 860-7397 or lwhite@lagaycenter.org

April 2008

- 4-6 **San Dieguito UU Congregational Retreat**
For info, contact (858) 755-9225 or office@uufsd.org
- 7 - 10 **Camp for Homeschooling Families**
For info, contact (909) 794-2928 or caroline@uucamp.org
- 11-13 **Camp Getaway for Mothers & Others**
For info, contact (310) 471-3138 x103
or www.campgetaway.com
- 18-20 **UU Men's Retreat**
For info, contact (619) 466-5952 or mdorfi@cox.net
- 25 - 27 **Camp Recovery**
For info, contact www.camprecoveryinfo.com

May 2008

- 2-4 **UU Women's Retreat**
For info, contact (909) 794-2928 or caroline@uucamp.org
- 9-11 **Work Weekend**
For info, contact (909) 794-2928 or caroline@uucamp.org
- 15 **Pathways Academy** (Private)
- 16-18 **Monte Vista/Orange County UU Congregational Retreat**
For info, contact (909) 626-0520, mail@montevistauu.org
or (714) 999-1077, judy2write@yahoo.com
- 23-26 **Camp Bravo Theater Arts Educators' Weekend**
For info, contact www.campbravo.org
- 30 - 6/1 **First UU Church San Diego Congregational Retreat**
For info, contact (619) 298-9978 or mail@firstuusandiego.org



Charitable Contributions After Death

by Patti Londre – Owner of Camp GetAway, held at de Benneville twice a year

Not a popular subject, but charitable contributions after death can be a significant portion of total donations for non-profits

This past year, I had the gift of being executor of a trust. My friend had been in her 80s with no close relatives, had never married and had no children. She died at home and her papers were in good order. Over her lifetime, she had built a sizeable estate. At first, it saddened me that she worked her entire life with her only legacy being to leave pots of money to strangers. But as I said before, the job was a gift...a gift of education. I came to realized that the “strangers” she left her money to were her heartsongs – charitable organizations.

Terri had been rather shy in life. She hated having attention drawn to herself. She was retired from the advertising world, had owned some rental properties and had been a very active animal rescue volunteer. She had lived modestly and you would never have gotten the impression that she had money. Yet when she passed away, she had close to 20 different financial accounts, most of which were earmarked for a particular charity.

As I handled Terri’s affairs, I began to consider why she had chosen charities instead of the grandchildren of friends, distant cousins or other “people” to bestow her hard earned cash.

After all, wouldn’t you think that if one wanted to be loved after one’s death, leaving money to the people in one’s life would be a good way to do it?

As I traveled this journey and talked with my friends, clarity emerged. I was reminded that solid family and true friends love you no matter how much money you leave to them. In many ways, the bigger the pot, the larger the hornet’s nest within a family. Sudden wealth can bring out the worst in individual people, but often brings out the best in non-profits.

Why am I writing this for the Connection newsletter? To give readers an idea.

Yes, you are loving to name your children and family in your will. They are the people in your life that you want to help, even after your death. Consider, though, that the impact may not always be what you plan or desire. Studies show people can burn through new money quickly with no long-term impact being made. When you name a reputable charitable organization in your will however, the organization is bound and obligated to spend your hard-earned money for the benefit of the community it serves.

Do you have an IRA or a long-term CD? Large or small, it doesn’t matter. Obviously, its first purpose is to benefit you during the length of your own life. That’s what it is for.

But naming a charity like de Benneville as a beneficiary, so that if there was some left when you passed, it could... no, make that **WOULD** make a marvelous difference for all the children, adults and families who come to and love the camp.

What would happen with money left to de Benneville? Of course, it depends on the amount, but think of this: it could build an endowment, expand a kitchen, buy an ice maker, fix a sewer, remodel a cabin, purchase a truck, add a fence, create another cabin, clear dead trees, hire additional staff, fix a foundation, rebuild a driveway, resurface the swimming pool. The list is endless. And your gift? The benefit to the camp is priceless.

Talk to your tax accountant to learn the remarkable financial benefits to your estate, no matter the size. A plaque with your name on it is just the teensy result of your generosity, but that means a lot, too.

For additional information about planned giving programs or other donations to de Benneville, please contact the camp office at (909) 794-2928 or uucamp@aol.com

Camp de Benneville Pines Donation Form

Donor Name(s):				
Donation Type	Pledge/Donation 2007	For 2008	For 2009	Amount
Raise the Roof Capital CAMPAign	\$	\$	\$	\$
Share the Vision Annual Fund Drive	\$	\$	\$	\$
Campfire Lighter’s Endowment Fund	\$	\$	\$	\$
Other Donation	\$	\$	\$	\$
		Total Enclosed/To be Charged		\$
Address		Home Phone		
City/State/Zip		Cell Phone		
If you would like to receive confirmation that your donation has been received or if you would like to charge a credit card for your donation, please include an e-mail address		E-Mail		
UU Congregation/Camp Affiliation		Camp de Benneville Pines is a 501(c)3 Non-profit Corporation. Your donation may be tax deductible. Consult your tax advisor.		
To use a credit card, complete the following: Card#		Expiration Date	Security Code: 3 digits M/V/D 4 digits AMEX	
To make your donation with a credit card Phone: (909) 794-2928 Fax: (909) 794-2418 E-Mail: caroline@uucamp.org		To make your donation by mail (check or credit card) Camp de Benneville Pines 41750 Jenks Lake Road West Angelus Oaks, CA 92305		



Two Volunteers Go Many Extra Miles for Camp

This summer, our camp was blessed with two wonderful volunteers. Both arrived from far away and dedicated three weeks of their summer vacation to help with the PSWD YoUuth Camps at de Benneville.

We first met Rebecca Swenson two years ago. A public school and Department of Corrections nurse in Kenosha, Wisconsin, Rebecca had wanted to be a camp nurse for many years. She had always been involved in what she calls “community health nursing”. At one time she had been a Visiting Nurse and had also worked for the Public Health Department. Having time off in the summer from her school nurse job, she felt that being a nurse for youth camp would be a natural job for her.

About 10 years ago, when Rebecca’s son was young, she took a job at a camp in Northern Wisconsin. She was supposed to be there for 8 weeks. “Camp Hell”, as she called it, was so bad that she left and took her son home 2 weeks early. With counselors that left their children unattended in lake-side cabins at night; staff that “partied” at night with their young counselors; a filthy and unstocked infirmary; and parents who didn’t seem to care about their children (one family dropped their diabetic son off at camp without his insulin or any instructions about when or how he needed



Rebecca Swenson

to manage his blood sugar!), Rebecca felt that she couldn’t continue in a professional capacity at the camp.

It was only after 6 or 7 years that Rebecca felt ready to try again. She looked in the *UU World* and saw the CU2C2 advertisement for the UU camp and conference centers. She e-mailed each one she was interested in



Dana & Rebecca at camp

attending. Janet responded to her e-mail to de Benneville within 24 hours and plans were made for Rebecca to come to camp that summer.

Rebecca speaks in glowing terms about the people on the PSWD YoUuth Camp Team and the de Benneville staff. She feels she has found a caring community at camp and admires how the UU Principles are lived in the community.

Rebecca wasn’t able to stay for the full 3 weeks the first year she was here because of a family emergency. Last year she had other commitments to attend to. After participating in all 3 YoUuth Camps this summer, Rebecca has vowed to be here every summer from now on. Once her 16 year old son is “launched”, she hopes to spend more time in Southern California and perhaps move here. Next summer, she expects to fly her son out for the Sr High camp.

We’re looking forward to seeing Rebecca again. She is a terrific camp nurse and is a great addition to the YoUuth Camps staff.

Our next wonderful volunteer, came to us also via the internet. After spending several weeks volunteering at The Mountain UU Retreat Center in North Carolina, Dana Poss wanted more. She had several weeks until her children returned from visiting their father. Her experience at The Mountain had been so wonderful, that she looked up UU camps on the internet and e-mailed several. De Benneville had a “job” listing asking for a volunteer to help during the summer. Dana applied and within a week, she was on a plane to Southern California.

Dana lives in Sterrett, Alabama, just outside of Birmingham. During the last year,

she has been very active with the youth in her congregation and district. She has driven kids to “Cons”, mini weekend conferences for the youth from many congregations to get together, events at The Mountain and other gatherings of youth.

Dana describes the town where she lives as a “boom town”. In the 1.5 years since she and her husband moved to Sterrett, the area has changed from a country town into a growing suburb of Birmingham.

Coming to camp was a chance for Dana to be away from the city. She was willing to walk the dogs, take care of the laundry and water the gardens at de Benneville. But when the YoUuth Camps Ministry Team needed additional staff, Dana’s experience working with youth made her the perfect addition.



Dana Poss

Dana was a wonderful counselor at camp this summer. She was always singing! She taught us new songs and new “eastern” versions of the songs we already sing. She was a great resource to learn “how it’s done” on the other side of the country.

Dana has also promised to return next year. She found the camp community to be very supportive and inclusive. She is looking forward to being back.

We were so happy to have both of these wonderful women at camp this summer. Their energy and enthusiasm were gifts to us all.

For more information about volunteer opportunities at camp, please contact the office at (909) 794-2928 or uucamp@aol.com



Some Places You Just Don't Take a Bus!

When professional bus driver, Chris Brazonis, heard our story about the tour bus that got stuck on the basketball court, it inspired him to write this original poem/song. Chris is a regular at the **Music in the Mountains Folk Music Weekend** at de Benneville each November, where he offers silly-song writing workshops.

Some places you just don't take a bus,
he shoulda seen it from the first.
But he thought to drive up into camp,
'n went from bad to worst.
Shoulda given up at th' first tight turn
but he pressed on ahead
trimmin' trees 'n scrapin' paint 'n nearly wound up **DEAD!**

Blew a couple 'a airbags so they felt ev'ry bump
then blew most of the tires right there on that hump
of a hill, whose "up" 'n "down" washed away in a recent rain
Sat there like a teeter-totter, all aboard to see-saw the strain.



Then the bright idea to rock them off the hill
started slidin' backwards, goin' faster still
Carpeting on the inside roof saved their knees
when they scampered 'round
as they came to rest 'cross a ravine
completely upside-down!

Helicopters lifted to safety one and all
but that doomed bus still hangs, one day sure to fall
Next time he takes a bus to camp,
from the road they'll schlep their stuff
Or get another driver, 'cause his last time was **ROUGH!**

Art is Alive in the Forest

Our Artist-In-Residence, Laura Janes, continues to improve de Benneville's visual space and inspires new artists. This summer's Art Camp was an exceptional experience for the 17 artists who attended. This fall, guest artists will create original art murals for each building at camp.



Betsy Gilpin paints her first painting ever! A mural for Cabin 7, the "Lake Cabin"



Marsha Harris creating a mural for Cabin 8, the "Tree Cabin"



The Art Show during Art Camp was a treat for PSWIRL campers



Sylvia Young's drawing, created in the Life Drawing Class at Art Camp, is one of several pieces donated to de Benneville. They will be available for sale during a Silent Auction through Thanksgiving. Contact the camp office for additional information.

Bella Desser "Drawing & Painting in the Forest" at Art Camp



To participate in the silent auction for art created during Art Camp this summer, please contact the camp office at (909) 794-2928 or caroline@uucamp.org. The art will be displayed and the auction remain open until Thanksgiving.



Meet AmeriCorps Team Blue 5



Katie Boehm (24)
Chicago, IL

Going to Habitat for Humanity
in Oakland, CA



Nate Cramer-Durning (23)
Evanston, IL

Going to University of Chicago for a
Masters in Elementary Education



Peter High (19)
Clearwater, FL

Going to Habitat for Humanity
in Oakland, CA



Team Leader **Erin Knudtson (24)**
West Palm Beach, FL

Seeking a job in the field of
Project Planning



Nicole Krause (23)
Ithaca, NY

Will attend the University of Buffalo
for a BA in Psychology/Political Science



William Manning (19)
Warner, NH

Going to school for Outdoor Leadership
& backpacking in Australia for a year



Lindsay Shedd (21)
Fairport, NY

Attending Buffalo State University
to complete a BS in Health & Wellness



Brandon Craig Stevens (21)
Odessa, TX

Finishing his B.A. in English
at the University of Texas



Katie Turner (19)
Cincinnati, OH

Will serve in the
United States Coast Guard



Shekeya Washington (20)
Charleston, SC

Studying nursing at
Del Mar College in Texas

AmeriCorps at camp

Continued from page 1

Alabama.

In Fairhope, they worked for Weeks Bay National Estuarine Research Reserve located on the east side of Mobile Bay. The team cleared areas for experiments using pitcher plants, built a barricade filled with old Christmas trees on the shoreline to prevent erosion for experiments on *Juncus* marsh grass, as well as removing invasive species and clearing debris from the shore.

After 7 months working in the Katrina ravaged area, the team was ready for a change. Their next and last project would be in California at de Benneville. Traveling in a 17-passenger van, they drove between the Gulf and Sacramento, then came to Camp de Benneville Pines.

Between each project, the team met with AmeriCorps*NCCC staff to debrief the previous project and prepare for the next. After working for de Benneville Pines, they traveled back to Sacramento for their final project debriefing and to

prepare for their graduation, which occurred on July 19th.

After graduation, each team member went their



Picking up debris next to the pool

separate ways. One will work with Habitat for Humanity in Oakland, CA, one will enlist in the Coast Guard. Several others are registered for school and will begin after a short summer break.

AmeriCorps*NCCC is a federally funded community service organization that recruits young people for service projects throughout the country. Anyone 18-24 years of age is eligible. Currently there are 3 campuses administering the program: Sacramento, CA; Denver, CO; and Perry Point, MD. A 4th location is in the planning stages. Each campus is assigned a region and serves a set number of states. Each corps member is given a bi-weekly stipend for personal needs. Food, housing and transportation are provided. Upon finishing the 10-month service, each member will receive a \$4,725 education bonus to be used in furthering their education. To find out more about AmeriCorps*NCCC you can visit their website at <http://www.americorps.gov/nccc>.



The Spirit of de Benneville Pines

High upon the mountain top
Amid the trees so green
Its Grayback Mountain in the west,
That's our Pacific scene

Mountains high.....
Waters blue.....
From mountain top.....
Love flows to you.....

We'll walk along the trail by day
We'll talk and sing by night
We'll make a lot of friendships true
And feel the forest's might

Mountains high.....
Waters blue.....
From mountain top.....
Love flows to you.....

With time to know each other
With time to know our self
Community, compassion
Restored in mountain health

Mountains high.....
Waters blue.....
From mountain top.....
Love flows to you.....

The Spirit of de Benneville
Runs deep as roots that grow
With hearts renewed in love & hope
Like sacred waters flow

Mountains high.....
Waters blue.....
From mountain top.....
Love flows to you.....

written by Janet James'
Girl Scout Troop several years ago.
Verses added for the 2007 PSWD
District Assembly by Steve Lawless

Pre - Register for the 2008 Women's Retreat Before January 15 to receive 2007 rates!

Retreat Dates - Friday, May 2 to Sunday, May 5, 2008

Pay your \$50 non-refundable deposit before January 15, 2008

The balance will be due April 15, 2008

2007 Rate with early registration deduction - **\$135/person**

Includes food, lodging and activities



Craig's Cabin/Cabin 6 - \$20/person additional

Add \$20 for Thursday night lodging

(first meal provided is Friday dinner)

Cancellation - Refund less \$50 before 4/15/08

No refund after 4/15/08



Meet Sally Carliss Theme Speaker - Family Camp 2008

Sally is someone you will look forward to meeting. An educator for over 20 years, Sally founded the Global Village School (www.globalvillageschool.org) in 1999. Passionately dedicated to helping create a more peaceful and just world, Sally has a Masters Degree in Education, a B.A. in Wilderness Recreation and a California teaching credential. She founded her school after working for many years in alternative education as a teacher, administrator and in curriculum development. She has been a teacher on an indian reservation in Idaho, has worked in outdoor education, is a musician, writer and public speaker.

Sally believes that education is a key component of progressive social change. Her school requires students to include peace and diversity studies as well as college preparatory classes in order to receive their diploma. With students enrolled from kindergarten through high school, the school offers a wide variety of classes, creating individual learning plans with the student's individual learning style respected and considered. The web page says, "We want our students to leave school with their self-esteem intact and feeling confident in their abilities to make an impact in the world around them."

At Family Camp next summer, Sally will be talking about what it means to be a Unitarian Universalist parent, how we can share our values with our children and how to support our children being spiritual and progressive thinking people in a world full of consumerism, violence, and inequality.

Please plan on joining Sally at the UU Family Camp 2008 for a week of deep thinking about ourselves as parents and lots of fun with our families!

Pre - Register for UU Family Camp 2008 Before January 15 to receive 2007 rates!

Pay your \$50/person non-refundable deposit by 1/15/08 - balance due 7/1/2008

2007 Rates: \$305/adult - \$290/teen (13 - 18) - \$280/child (3 - 12) - \$100/infant (0 - 2)

Craig's Cabin add \$80/person - Cabin 6 add \$50/person - Double Bed 5/7/8 add \$50 per room



LABOR DAY WEEKEND RETREAT

Friday, August 31 -
Monday, September 3, 2007

Relaxation, Fun & Not Much Else

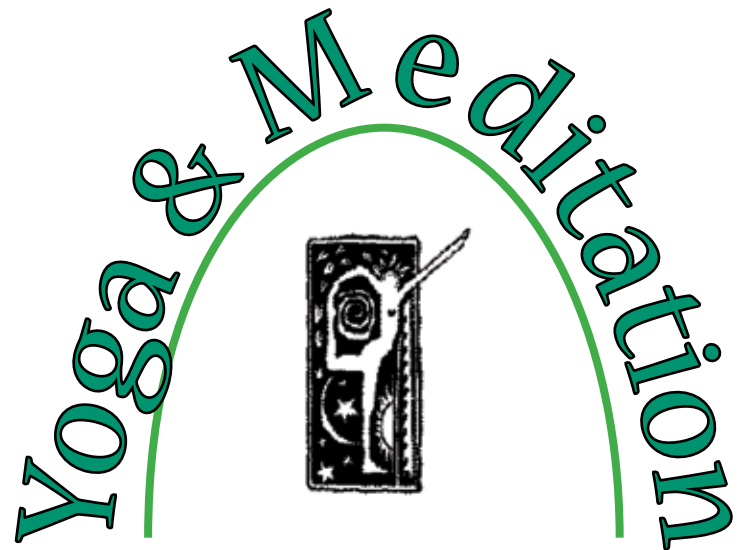
Only \$145 per adult, \$125 per child

Upgrades - \$30 per adult
Craig's Cabin & Cabin 6



Friday, September 7 - Sunday, September 9, 2007

9th Annual



Cost: \$175 per person

Registrations sent by 8/10/2007, **deduct \$15**
Includes food, lodging & activities

Upgrades: \$30 per person
Craig's Cabin or Cabin 6

Cancellation Policy:

\$50 fee per person before 8/10/2007
No refund after 8/10/07

Retreat

You Are Invited!

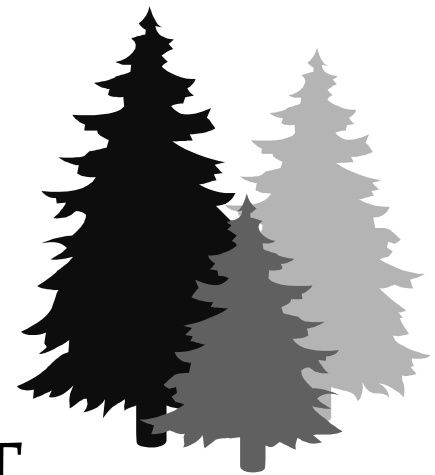
Orange County
ACA

With CoDA & Other 12-Step Programs Invited

19th Annual, 12-Step

FALL MOUNTAIN RETREAT

Sept. 14-16, 2007



Important Contacts Denise E. -----
Veronica C. -----
Madeline M. (rideshare) -----

(714) 323-0124
(714) 971-9039 or aca4me@sbcglobal.net
fmrchair@gmail.com

Registration DO NOT MAIL after September 7, 2007. Contact Denise, Veronica, or Madeline to reserve space, then bring check with you to camp.

Early Registration Discount/Mail-In Deadline \$130.
At Camp \$140

Must be Postmarked by Sept. 7, 2007
DO NOT MAIL

Upgrades: Craig's Cabin - add \$100 per room * Cabin 6 - add \$50 per room *
(* to be paid separately from reg. fee.)

Please make all checks payable to ACA – OC. Mail with registration form to:
Registration fee is non-refundable after August 14, 2007

ACA Orange County Intergroup
Attn: FALL MOUNTAIN RETREAT
P.O. Box 10683
Santa Ana, CA 92711-0683



For Mothers & Others

September 21 - 23, 2007 & April 11 - 13, 2008

For more information or to register call (310) 471-3138 x 103

www.CampGetAway.com Info@CampGetAway.com

Pamper yourself...Manicures, pedicures, facials, massages
Be active*...Canoeing, dance class, yoga, archery, hiking
Socialize...Group dinners, seminars, games, fireside fun, sing-a-longs
Create...arts & crafts, homemade gifts, tie-dye
 Most importantly...**RELAX!**



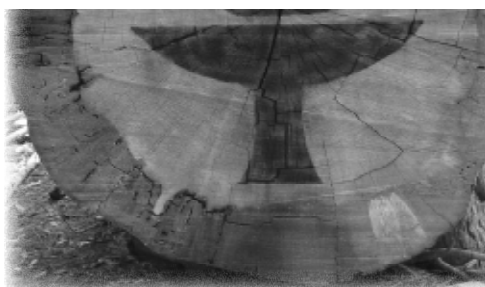
*Every camp is a little different due to the season, the fun offerings are tailored to date and weather.

LA / Valley Cluster Weekend

Renewing Our UU Spiritualities

Friday October 5th – Sunday October 7th, 2007

Workshops, Hiking, Children's Program, Inter-generational Activities
 Outdoor & Indoor Games, Relax in the Hot tub,
 Saturday Night Talent Show,
 Sunday Service under the Towering Pines



Adults: \$140/person Youth (3-17 years): \$90/person Children under 3 free
 Craig's Cabin/Cabin 6 - add \$20/adult Double Bed room - add \$20/room
 Deadline for Registration 9/15/07. Cancellation charge \$50 after 9/1/07.
 No refund after 9/15/07

For more information contact:

Louise louisepell@yahoo.com (661) 273-1068
 Margery radkova@sbcglobal.net (818) 986-4350

Please mail registration form
 and payment to:
 LA/Valley Cluster Camp
 c/o SUUS
 9550 Haskell Ave.
 North Hills, CA 91343



Camps for Homeschooling Families

Registration:

\$80/person, max \$320/family, children under 2 free
Includes all activities, lodging & meals

Upgrade: \$20/person for Craig's Cabin/Cabin 6

Cancellation Fee

\$50/family before 10/1/07 or 3/17/08
No Refunds after 10/1/07 and 3/17/08

Join families who homeschool for a fun week at camp!
The schedule is relaxed, allowing plenty of time for kids to explore and parents to talk.

Hiking, archery, crafts, tie dying, nature, games, talent show---volunteer to offer your favorite event.

There is always plenty of fun and wonderful new friends to meet.

Monday - Thursday

October 22 - 25, 2007 + April 7 - 10, 2008



Pacific Southwest District

www.pswduua.org

Presents two training opportunities
at Camp de Benneville Pines

Workshop for New DREs

Thursday, October 25, 2:00 pm -
Friday, October 26, 12:00 pm

Led by **Liz Jones**

DRE at First UU Church of San Diego

Learn About:

general resources	group leadership skills
working with staff	worship skills
curriculum	and more!

Cost - \$75

Includes Workshop & Lodging (bring food to share)

RE Administration

Renaissance Module

Friday, October 26, 2:00 pm -
Sunday, October 28, 12:00 pm

Trainers:

Katherine Martin, DRE at Orange Coast UU

Karen Lapidus

RE Consultant, Ohio-Meadville District

Cost - \$250 (deduct \$25 before 9/28)

Includes Workshop, handouts, reading materials
all meals and lodging

Make checks payable to "PSWD"

Include with registration form and mail to: PSWD, 2052 Norma St, Oxnard, CA 93036-2711

Mention workshop name in memo line



Work Weekend

Your Help is Need!

Skilled and unskilled, everyone is welcome and appreciated

(ages 11+ for safety)

Delicious food and comfortable accommodations

are provided - **FREE!**

Friday, October 26 - Sunday, October 28, 2007



RSVP to
caroline@uucamp.org
or (909) 794-2928



Music in the Mountains

Folk Music Weekend & Contra Dance

♪ Jam Sessions

♪ Celtic Fiddle - **Maury Richmond**

♪ Celtic & Scottish Lore

♪ Friday Night Contra Dance

♪ Contra Caller - **Ginger Alberti**

♪ Campers Concert

♪ Songs of Meaning

♪ Carter Family Songs

♪ Song Workshops

♪ Sing-a-longs

♪ Dance Workshop

Friday November 2 - Sunday November 4, 2007

Full Weekend (includes Contra Dance, food, lodging, all workshops & activities) - \$90/adult, \$75/youth (3-17)

Contra Dance Only \$5/person • Deluxe Cabins (Craigs & #6) - add \$35/person

Cancellation Policy: \$25/person fee before 10/25/07. No refund after 10/25/07





Rainbow Family Camp

A Weekend Camp for LGBT Families

Friday, Nov 16 - Sunday, Nov 18, 2007

ACTIVITIES INCLUDE:

Arts & Crafts **Hiking** **Talent Show** **Movies** **Parent Socials**
Outdoor Sports Activities **Indoor Games** **Community Meals** **LOTS OF FUN!!!**

\$117/adult - \$82/Teen (13-19) - \$42/child (3-12) - Under 3 free!

Includes meals, lodging and all programs.

Non-refundable cancellation fee - \$50/family before November 1, 2007

No refund after 11/1/07

Make check payable to "Camp de Benneville Pines"

Mail to: Lisa White, Family Services Program, 1625 N. Schrader Blvd., Los Angeles, CA 90028



Rainbow Family Camp is sponsored by the L.A. Gay & Lesbian Center's Family Services Program and Camp de Benneville Pines.
Funded in part by First 5 LA for children 0-5 and their families

For questions, call (323) 860-7342 or e-mail familyservices@lagaycenter.org

Thanksgiving Holiday Celebration

**Thursday, November 22 -
Sunday, November 25, 2007**

They'll be com'n 'round the mountain

when they come....

Registration

Includes all workshops, activities, lodging, meals,
and Thanksgiving Feast Thursday evening

Thursday - Sunday:

\$175 Adult, \$125 Youth (3 - 17)

Children under 2 are free

Upgrade: Craig's Cabin/Cabin 6 - \$35/adult

Rooms w/ 1 Double Bed in 5/7/8 - \$35 per room

Wednesday after 4:00 pm Arrival

(no meals served): add \$20 per person

Friday after 2:00 pm Arrival:

deduct \$20 per person

Cancellation:

Refund less \$50/family before November 10, 2007

No refunds after 11/10/2007

Please join us for de Benneville's annual
Thanksgiving Holiday Celebration. It's a retreat
from shopping, chopping, cleaning and cooking;
a celebration with friends and family in the crisp autumn air.

There's lots to do. Attend workshops, hike or read by the fire.
Sing, dance, stretch your mind and body, get a massage.
There's also plenty of space to relax and do nothing.

The scents of Thanksgiving fill the lodge.
Pumpkin pie, hot apple cider, fresh baked bread and,
of course, turkey, dressing and all the rest!

Come alone or bring your family.
Arrive on Wednesday, Thursday or Friday.
Be part of the de Benneville Thanksgiving tradition!



COMING OF AGE RETREAT & JR HIGH CAMP

Third Annual!



Friday, November 30 - Sunday, December 2, 2007

We want *YOUR* Coming of Age group to benefit from the awesome experience of being together in deep community with Unitarian Universalists from across our great district.

The COA retreat is meant to supplement your local group's program. During the retreat, there will be the time, space and people for intensive community building exercises, self-reflection, creating learning challenges, and deepening spiritual growth. COA Facilitators will engage in group activities as well as having time with peers to discuss successes, learn additional skills, and troubleshoot. Make the Coming of Age Retreat at camp an integral part of your Coming of Age program!

This wonderful winter weekend is also for Jr High Youth not participating in a Coming of Age program. Activities will include all youth at the retreat.

Registration

Youth (Jr High/Middle School aged) - \$140 COA or Youth Advisor - \$110

Sibling Discount - \$15 (one per family) T-Shirt \$12 Sweatshirt \$25

Submit registration with a \$50 non-refundable deposit - No refunds after check-in

Look for Winter Super Camp Sunday sign ups, at your church October 21, for additional discounts!

camp power puff youth

PSWD/YRUU Sr High Winter Camp

Political empowerment for the next generation.

Learn how to get more involved in local and national campaigns, learn about the issues affecting youth here and abroad, learn how you as a young political mind can make change without a ballot.

Registration

YoUUth (Sr High School aged) - \$350

Deduct \$35 if registering before 11/30/2007

Sibling Discount - \$15 (one per family)

T-Shirt \$12 Sweatshirt \$25

*Submit registration with a \$50 non-refundable deposit
No refunds after check-in*

youth deans • kevin arnold & sean nail / adult dean • kim st elair

thursday, december 27, 2007 • tuesday, january 1, 2008



Spirit Filled Fun!

PSWD Elementary Winter Camp

Let's Play! We'll explore our UU values and the Spirit of Life through theater games, art, worship, and outdoor snow play. Campers develop greater self-esteem, self-awareness, and live in UU community for one long winter weekend.

Elementary Camp is for children ages 8 - 12. Children ages 5-7 and children not ready to come to camp by themselves are invited to bring their parents. Parents may attend with the understanding that if their children are younger than 2nd grade, they will accompany them throughout the day and be primarily responsible for them. If their children are 3rd grade or older, parents will be expected to assist with some of the workshops and activities.

Registration

\$140/child \$110/parent
 Sibling Discount - \$15 (one per family) T-Shirt \$12 Sweatshirt \$25
 Submit registration with a \$50 non-refundable deposit
 No refunds after check-in

Presidents' Day Weekend
Saturday, February 16 - Monday, February 18, 2008

Look for Winter Super Camp Sunday sign ups, at your church October 21, for additional discounts!



Friday, March 14 - Sunday, March 16, 2008

Girl Scout SongSwap Weekend

with Leader Training Workshop

Bring your troop for a chance to sing, play, learn, grow and have fun together. Leaders have the opportunity to attend an intensive song workshop—learn lots of songs, learn how to involve your girls in singing and sharing songs.

There will be music, music, music! Storytelling, roasting marshmallows, sledding in the snow, looking at the stars or playing games by the fire. De Benneville provides your food and a warm, snug place to sleep. A memorable weekend!

Registration:

Cost: \$55 per person

Includes Fri & Sat night lodging, Sat breakfast - Sun breakfast meals

Additional Information:

Please include your troop number and level on your registration form

Cancellation: Full refund for individual cancellations up to 30 days before camp.

\$5 per person cancellation fee for troop cancellations. No refund for cancellations less than 30 days before camp.

Adult Event Registration Form

Event Name:				Event Dates:				
Attendee Names	Special Diet, Allergies or Medical Needs	Fee	Upgrade	Extra Day	Early Reg Discount	Friend Discount	Donation	Total Due
								\$
								\$
								\$
Total enclosed/to be charged								\$
Address				Home Phone				
City & State				Cell Phone				
Zip	If you would like to receive confirmation that we have received your registration or if you would like to charge your fees, please include an e-mail address.			E-Mail				
Circle Requests:	Craig's Cabin	Cabin 6	Double Bed	(upgrade may apply)	Bottom Bunk		Carpool (if available)	
Roommates:				Additional Information:				
UU Congregation								
To use a credit card, complete the following: Card#			Expiration Date:		Security Code: 3 digits M/V/D or 4 digits AMEX			
To pay via credit card, call, fax or e-mail your registration information to: Phone (909) 794-2928 Fax (909) 794-2418 or caroline@uucamp.org								

Family Event Registration Form

Event Name:				Event Dates:				
Attendee Names	Special Diet, Allergies or Medical Needs	Adult=A or Child's Age	Fee	Upgrade	Extra Day	Early Reg Discount	Donation	Total Due
								\$
								\$
								\$
								\$
Total enclosed/to be charged								\$
Address				Home Phone				
City & State				Cell Phone				
Zip	If you would like to receive confirmation that we have received your registration or if you would like to charge your fees, please include an e-mail address.			E-Mail				
Circle Requests:	Craig's Cabin	Cabin 6	Double Bed	(upgrade may apply)	Bottom Bunk		Carpool (if available)	
Cabinmates:				Additional Information:				
UU Congregation								
To use a credit card, complete the following: Card#			Expiration Date:		Security Code: 3 digits M/V/D or 4 digits AMEX			
To pay by mail, return your registration form with a check to: Camp de Benneville Pines, 41750 Jenks Lake Rd West, Angelus Oaks, CA 92305								

PSWD YoUUth Camp Registration Form

Camp Name:						Camp Dates:				
Attendee Names	Special Diet, Allergies or Medical Needs	Birth Date	Grade	M/F	Fee	Early Reg Discount	Sibling Disc (1 per family)	T-shirt \$12 Sweatshirt \$25	Scholarship Fund Donation	Total Due
										\$
										\$
										\$
If you have a special or high-needs child, please let us know. We will have someone contact you to determine the best way to support your child and the family.							Total enclosed/to be charged		\$	
Parent's Name(s)										
Address						Home Phone				
City & State						Cell Phone				
Zip	If you would like to receive confirmation that we have received your registration or if you would like to charge your fees, please include an e-mail address.					E-Mail				
First Time Camper?		Yes / No		Do you need a PSWD Scholarship?		Scholarships are awarded on the basis of need and a camper's willingness to raise money for him/herself. Please send scholarship requests to Tera Little at teralittle@worldnet.att.net or (626) 840-5412				
Cabinmates:						Additional Information: (shirt size, etc.)				
UU Congregation										
To use a credit card, complete the following: Card#					Expiration Date:		Security Code: 3 digits M/V/D or 4 digits AMEX			

Camp de Benneville Pines
Board of Directors
2007-2008

President
Joan Stredler

Vice President
Glenn Noreen

Secretary
Karen Quinn

Treasurer
Eric Klatt

Members at Large
Rev John Morehouse
Dr Ross Quinn
Gil Speer
Tom Thorward
Clarice Turney

Camp Staff

Executive Director
Janet James
uucamp@aol.com

Administrative Assistant
Caroline Quintanilla
caroline@uucamp.org

Lead Cook
Marvin Gardenhire

Maintenance
Danny Candelaria

Our Mission:

The mission of Camp de Benneville Pines is to provide a mountain retreat where Unitarian Universalist principles and values are lived and celebrated in community.

Camp Purpose

- To provide a place to relax and recreate in life-affirming ways
- To provide a central gathering place for the Pacific Southwest District
- To provide a place for promoting life-long spiritual growth
- To develop leaders through volunteer opportunities/experiences
- To conserve a wilderness setting
- To extend UU influence in the larger community
- To encourage the expression of diverse ideas in a safe atmosphere of mutual respect
- To facilitate the ongoing process of community building within and among UU societies



This facility is operated under a Special Use permit on land under the jurisdiction of the US Department of Agriculture, Forest Service. The United States Department of Agriculture (USDA) prohibits discrimination in all its programs and activities on the basis of race, color, national origin, gender, religion, age, disability, political beliefs, sexual orientation, and marital or familial status.

Unitarian Universalist Principles and Purposes

We, the member congregations of the Unitarian Universalist Association, covenant to affirm and promote:

- The inherent worth and dignity of every person;
- Justice, equity, and compassion in human relations;
- Acceptance of one another and encouragement to spiritual growth in our congregations;
- A free and responsible search for truth and meaning;
- The right of conscience and the use of the democratic process within our congregations and in society at large;
- The goal of world community with peace, liberty, and justice for all;
- Respect for the interdependent web of all existence of which we are a part.

The living tradition we share draws from many sources:

- Direct experience of that transcending mystery and wonder, affirmed in all cultures, which moves us to a renewal of the spirit and an openness to the forces that create and uphold life;
- Words and deeds of prophetic women and men which challenge us to confront powers and structures of evil with justice, compassion, and the transforming power of love;
- Wisdom from the world's religions which inspires us in our ethical and spiritual life;
- Jewish and Christian teaching which call us to respond to God's love by loving our neighbors as ourselves;
- Humanist teachings which counsel us to heed the guidance of reason and the results of science, and warn us against idolaters of the mind and spirit;
- Spiritual teachings of Earth-centered traditions which celebrate the sacred circle of life and instruct us to live in harmony with the rhythms of nature.

Grateful for the religious pluralism which enriches and ennobles our faith, we are inspired to deepen our understanding and expand our vision. As free congregations we enter into this covenant, promising to one another our mutual trust and support.

How to Contact Us

Camp de Benneville Pines
41750 Jenks Lake Road West
Angelus Oaks, CA 92305

Camp Office Number
909-794-2928

Camp Lodge/Kitchen
909-794-8712

Camp Maintenance Shop
909-794-4530

Camp E-mail
uucamp@aol.com

Camp Website
www.uucamp.org

The **Connection** is mailed out to 2,500 subscribers as well as people who have attended a de Benneville sponsored event at camp during the last year. If you would like to receive the **Connection** twice a year, please e-mail Caroline in the camp office to be added to the subscription list. Subscriptions may be by paper copy via postal mail or a downloadable Adobe Acrobat file via e-mail.

