



Camp de Benneville Pines

Connection

Spring/Summer 2009

Your Unitarian Universalist Mountain Retreat

PSWIRL- Summer Camp for Grownups!

Since the 1960's, the Pacific Southwest Institute of Religious Liberals has gathered at Camp de Benneville Pines each summer. Originally meeting at Camp Radford in the 1950's, it was PSWIRL that instigated the purchase of Camp Arataba from the Boy Scouts. Arataba was to become, in time and with a great deal of volunteer labor, our Unitarian Universalist Camp de Benneville Pines.

PSWIRL continues each summer to provide an interesting and stimulating program for adults. The cornerstone of their week is the Theme Speaker. Each morning, the specially invited speaker discusses his or her topic, with a talk-back session after.

The 2009 speaker will be Reverend Jim VanderWeele and the topic "The Secret of Working Together in Time of Crisis". As Minister at the [Community Church Unitarian Universalist in New Orleans](#), Rev. VanderWeele has spent the last several years aiding in the post-Hurricane Katrina rebuilding efforts. His experiences and insights will be part of the discussion during his PSWIRL talks.

After the morning Theme Talk, the rest of the day is available to enjoy the pool and hot tub, as well as a variety of workshops and activities. Workshops scheduled for this summer include Astronomy, Brain Education, Creative Writing, Dream Work, Guitar, Healing from Within, Journaling, Qi Gong, Spirituality & Tarot, Watercolor, Yoga and Massage. In addition, there will be Nature Walks in the early

morning, Folk Dancing each evening, video programs, a trip to the Big Bear Solar Observatory, an opportunity to canoe or kayak on Jenks Lake, the Talent Show and a Social Hour each evening.

There are two new programs added for this summer. The Landscape Photography module will be taught by Big Bear professional artist and photographer, Greg Zook. Each morning, there will be a photographic safari and each afternoon instruction in photographic techniques. The goal will be to learn how to take an excellent digital image.

The Kayaking & Hiking program will offer explorations of the beautiful areas surrounding the camp. The hikes and kayak trips will be moderate with the goal to explore, experience and enjoy the forest, streams and lakes.

Both programs will be in addition to the PSWIRL activities, allowing campers to participate in both programs. Because of the specialized nature of the modules, there will be an additional cost to participate.

The dates for PSWIRL this summer are Sunday, August 23 - Friday, August 28, 2009. More information about the 2009 camp as well as the modules can be found on the PSWIRL website at <http://pswirl.org>



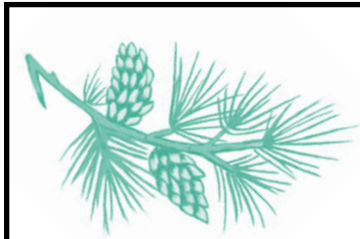
This spring's 13th annual Women's Retreat will feature the award-winning storyteller, [Karen Golden](#).

Karen has been to camp several times, but this will be her first Women's Retreat. She will lead us into our theme, **Women as Storymakers**, by telling her stories--a tapestry of tales from the fabric of her life, her rich Jewish heritage and world folklore. Later, she will offer a workshop where participants have the opportunity to share their stories, explore the stories of women who have been influential to them, learn what makes a memorable story and practice improving their storytelling skills.

Women as Storymakers

The rest of the retreat includes workshops and activities, each a sharing of the leader's individual story. Some of the offerings include Being Green, Belly Dancing, Calligraphy, Drawing Our Stories, Laughter Yoga, Speak Out! Telling Our Stories in Public, Telling our Stories Online, Writing from the Inside Out, and the Zen of Photography.

This is a retreat from your everyday world. A chance to play, explore, share and relax. For additional information, updates on workshops and the schedule, go to <http://sn.im/womensinfo>



Contents			
PSWIRL - Camp for Grownups	1	Family Camps & Retreats	4, 6, 7
Women as Storymakers	1	Homeschool Family Camps	4
Calendar of Events	2	Work Weekends	7
Camp Scholarships	3	Young Adult Retreat & Gathering	4
DBP Donation Form	3	YoUuth Camps & Trainings	4, 5
12-Step Retreat	4	Registration Forms	7
Adult Camps & Retreats	3, 4, 5, 6, 7	Contact Information	8

Camp de Benneville Pines

Calendar of Events 2009

April 2009

- 3-5 **San Dieguito UU Congregational Retreat**
For info, contact (858) 755-9225 or office@uufsd.org
- 6-16 **Facility Not Available - Maintenance Project Underway**
- 17-19 **UU Men's Retreat**
See advertisement on page 3 for additional info
- 20-23 **Camp for Homeschooling Families**
See advertisement on page 4 for additional info
- 24-26 **UU Women's Retreat**
See advertisement on page 3 for additional info

May 2009

- 1-3 **Camp Recovery**
See advertisement on page 4 for additional info
- 8-10 **Work Weekend**
See advertisement on page 7 for additional info
Craig's Cabin Available for Lease
- 14 **Diamond Bar High School - Pathways Academy (Private)**
- 15-17 **Monte Vista/Riverside UU Congregational Retreat**
For info, contact (909) 626-0520, mail@montevistauu.org
or (951) 686-6515, uucr@juno.com
- 22-25 **Camp Bravo Theater Arts Educators' Weekend**
For info, contact (888) 442-7286 or www.campbravo.org
- 29-31 **First UU Church San Diego Congregational Retreat**
For info, contact (619) 298-9978, mail@firstuusanidiego.org

June 2009

- 2-4 **New City School (Private)**
- 5-7 **PUC/Orange County UU Congregational Retreat**
For info, contact (310) 378-9449, admin@pacificunitarian.org
or (714) 999-1077, judy2write@yahoo.com
- 8-10 **Ocean Charter School (Private)**
- 12-14 **Early Summer Weekend (Open to All)**
See advertisement on page 6 for additional info
Family Reunion (Private) Craig's Cabin & Cabin 6
- 19-21 **Santa Monica/Chalice UU Congregational Retreat**
For info, contact (310) 829-5436, office@uusm.org
or (760) 737-0393, office@chaliceuu.org
- 24-27 **Camp Available for Lease**
- 28-7/4 **Camp Bravo Theater Arts Camp for Middle Schoolers (Wk 1)**
For info, contact (888) 442-7286 or www.campbravo.org

July 2009

- 5-11 **Camp Bravo Theater Arts Camp for Teens (Wk 2)**
For info, contact (888) 442-7286 or www.campbravo.org
- 12-18 **PSWD YoUUth Camp - Elementary (grades 2 - 6)**
PSWD Counselor-In-Training Program (ages 15 - 18)
- 19-25 **PSWD YoUUth Camp - Jr High (grades 6 - 9)**
- 26-8/1 **PSWD YoUUth Camp - Sr High (grades 9 - 12)**
PSWD Adult Advisor Training (ages 25+)
See advertisements on page 5 for additional info

August 2009

- 2-8 **PSWD UU Family Camp**
See advertisement on page 4 for additional info
- 9-15 **Camp Bravo Theater Arts Camp for Teens (Wk 3)**
- 16-22 **Camp Bravo Theater Arts Camp for Teens (Wk 4)**
For info, contact (888) 442-7286 or www.campbravo.org
- 23-28 **PSWIRL Summer Camp for Grownups with Landscape Photography & Kayaking/Hiking Modules**
See advertisement on page 6 for additional info
Art Camp
See advertisement on page 6 for additional info
- 28-30 **Neighborhood UU Congregational Retreat**
For info, contact (626) 798-1375
or Melinda.Goddard@clearmansrestaurants.com

September 2009

- 1-4 **PSWD Youth Leadership Training (Craig's Cabin)**
See advertisement on page 5 for additional info
- 4-7 **PSWD Young Adult Retreat**
See advertisement on page 4 for additional info
PSWD Wilderness Journey Program
See advertisement on page 4 for additional info
- 11-13 **Yoga & Wellness Retreat**
See advertisement on page 6 for additional info
- 18-20 **12-Step Fall Mountain Retreat**
For info, contact (714) 323-0124 or suneyes3@gmail.com
- 21-25 **Camp Bravo-La Jolla Country Day School (Private)**
- 25-27 **Channel Cluster UU Congregational Retreat**
For info, contact (805) 415-4919 or david@barker.nu

October 2009

- 2 - 4 **Camp Getaway for Mothers & Others**
For info, contact (310) 471-3138 x103
or www.campgetaway.com
- 9-11 **Valley Cluster UU Congregational Retreat**
For info, contact (661) 273-1068 or louisepell@yahoo.com
- 11-14 **Camp Bravo-El Rancho Middle School (Private)**
- 16-18 **Tapestry/Orange Coast UU Congregational Retreat**
For info, contact (949) 581-0245, admin@tapestryuu.org
or (949) 646-4652, info@ocuuc.org
- 19-23 **Odyssey Charter School (Private)**
- 23-25 **Women Together (Private)**
- 29-31 **PSWD Renaissance Module**
For info, contact (626) 840-5412 or teral@att.net
- 30-11/1 **Work Weekend**
For info, contact (909) 794-2928 or caroline@uucamp.org

November 2009

- 6-8 **Music in the Mountains Folk Music Weekend**
See advertisement on page 7 for pre-registration
- 9-12 **Camp for Homeschooling Families**
See advertisement on page 4 for additional info
- 13-15 **Fullerton/Las Vegas UU Congregational Retreat**
For info, contact (702) 437-2404, admin@uucv.org
or (714) 871-7150, www.uufullerton.org
- 20 - 22 **Rainbow Pride Youth Alliance (Private)**
- 27 - 30 **Thanksgiving Holiday Celebration**
See advertisement on page 7 for pre-registration

December 2009

- 4-6 **PSWD Jr High Fall Camp & Coming of Age Retreat**
PSWD Adult Advisor Training
For info, contact (909) 794-2928 or caroline@uucamp.org
- 7-25 **Camp Available for Lease**
- 26-1/1 **PSWD/YRUU Sr High Winter Camp**
For info, contact (909) 794-2928 or caroline@uucamp.org

Registration information for any of the retreats listed may be obtained by calling the camp office at (909) 794-2928, e-mailing caroline@uucamp.org, or from the camp's website at www.uucamp.org.

Most event details can be found in this newsletter. Registration forms are on page 7.



Make Your Donation Count Double

In times of economic hardship, it is important to take care of what we have. 15 years ago, de Benneville was under the threat of closing. What turned the tide was a commitment by Janet and the Board to fill the schedule and use the camp to capacity.

Today, filling the camp schedule and running at capacity is still the best way to keep the camp vital and healthy. You can help and in doing so, double the value of your donation.

When you make a donation to the scholarship fund, you help children, adults and families enjoy an experience at camp. This may get them away from a difficult home or work situation. It will help them become part of the camp community and to feel more whole and healthy in their life. Helping campers attend de Benneville, when they might not otherwise be able to, also allows us to fill events to capacity. In this way, your donations help both a camper and the camp as well.

Please consider making a donation to the camp’s scholarship fund.

Camp de Benneville Pines Donation Form

Donor Name(s):				
Donation Type	Pledge/Donation 2009	For 2010	For 2011	Amount
Raise the Roof Capital CAMPAign	\$	\$	\$	\$
Share the Vision Annual Fund Drive	\$	\$	\$	\$
Campfire Lighter’s Endowment Fund	\$	\$	\$	\$
Scholarships & Other Donations	\$	\$	\$	\$
			Total Enclosed/To be Charged	\$
Address		Home Phone		
City/State/Zip		Cell Phone		
If you would like to receive confirmation that your donation has been received or if you would like to charge a credit card for your donation, please include an e-mail address		E-Mail		
UU Congregation/Camp Affiliation		Camp de Benneville Pines is a 501(c)3 Non-profit Corporation. Your donation may be tax deductible. Consult your tax advisor.		
To use a credit card, complete the following: Card#		Expiration Date	Security Code: 3 digits M/V/D 4 digits AMEX	
To make your donation with a credit card or PayPal (www.paypal.com) Phone: (909) 794-2928 Fax: (866) 481-2805 E-Mail: caroline@uucamp.org		To make your donation by mail (check or credit card) Camp de Benneville Pines 41750 Jenks Lake Road W Angelus Oaks, CA 92305		



Embracing Change in Uncertain Time\$

UU Men’s Fellowship Spring Renewal April 17-19, 2009

Do you have uncertainty in your finances, relationships or with power?
Are you facing change in the money, love or power areas of your life?

We will explore uncertainty and life changes, while providing opportunities to share experiences and ways to cope, in the safe space with Brothers. As usual the weekend will include workshops, deep sharing, music and drumming, silence, ritual, sweat lodge, songs, laughter, and great food.

Register at:

http://firstuusandiego.org/docs/uumf_registration_spring_2009.pdf

It is our policy to support attendance by men who may have financial difficulties. For information about the retreat or scholarship assistance, please contact Mike Dorfi at (619) 466-5952 or mdorfi@cox.net

Women as Storymakers

13th Annual Women’s Retreat
April 24 - 26, 2009

With award-winning storyteller Karen Golden leading the way, we will share our stories, learn new ways to create beautiful and powerful her-stories, and find the common threads in our stories as women.

The retreat is a weekend away from your every-day life with yoga, writing, workshops, the hot tub, healing, dancing, art, fun activities and great food.



\$165.00 per person
Craig’s or Cabin 6 - \$30 pp additional
Thursday Arrival - \$20 pp lodging (no meals)
Cancellation Policy - \$75 fee before 3/31/2009
No Refund after 3/31/2009



Camps for Homeschooling Families

Join families who homeschool for a fun week at camp!

The schedule is relaxed, allowing plenty of time for kids to explore and parents to talk. Hiking, archery, crafts, tie dying, nature, games, talent show---volunteer to offer your favorite event. Special activities for teens.

There is always plenty of fun and wonderful new friends to meet.

For additional information,
call Caroline at (909) 794-1252 or caroline@uucamp.org

Registration: \$90 per person (Includes all activities, lodging & meals)

Max \$360/family (not including upgrades) * children under 2 free * Upgrades: \$20/person for Craig's Cabin or Cabin 6

Cancellation Fee: \$75/family before 3/31/2009 or 10/25/2009 * No Refunds after 3/31/2009 or 10/25/09

Monday - Thursday April 20 - 23 & November 9 - 12, 2009

You're Invited to the 21st Annual Camp Recovery 2009

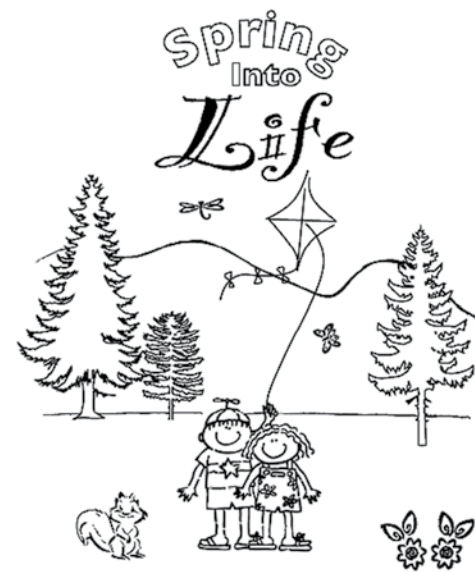
A weekend of self-care where you and your "inner child" can grow, heal, play, discover, reflect and work on yourselves.

"Spring into Life": journey into recovery with enthusiasm.

Workshops, 12-step meetings, crafts, music, drumming, hiking, body movement, dancing and fellowship.

All persons from ACA, CODA and similar 12-step programs are invited.

Registration & Information: <http://camprecovery.org>



May 1 - 3, 2009

Grooving Together

PSWD UU Family Camp

Sunday - Saturday, August 2 - 8, 2009

In this time of change and opportunity, we find support in community....

Join us for a week of fun and community at camp. Enjoy your children, relax with friends old & new, share camp activities: Archery, the Banquet, Capture the Flag, Crafts, Hikes, Hot Tub, Ice Cream Social, Kayaking & Canoeing, Music, Movie Night, No-talent Talent Show, Singing, Swimming, Tie Dying, Worship and much more!

Finding Family in the Mountains

\$325/adult

\$295/teen (13-18) * \$285/child (3-12)

\$100/baby-toddler (0-2)

Craig's +\$80/pp * Cabin 6 +\$50/pp

Double Bed in 5/7/8 +\$50/room

Friday - Monday, September 4 - 7, 2009

Building Community

Deepening
Faith

Ages 18 - 35

Committing
to Justice

Register at <http://connectuu.com>

Wilderness Journey

Culmination Backpacking Trip

Friday - Monday, September 4 - 7, 2009

For youth ages 14 - 18

Must have completed the pre-requisite conditioning & planning trip during Sr High Camp in July.

Cost - \$90.00



incredible UU's

Come to camp and learn about UUs who have done incredible things...even UU kids! See how ordinary people from our faith have made a difference in extraordinary ways. Don't miss out! Swimming, archery, hiking, crafts, worship, new friends and lots of other great camp activities.

Dean: Suzanne Borth

pswd elementary camp
sunday - saturday. july 12 - 18, 2009

Blessed are the peacemakers for they will be called the children of God - Matthew 5:9

PSWD Jr High Camp

Dean: Barbara Braswell

We are the Peacemakers!

Learn how to be a peacemaker in your life and in the world. Each day at camp, we will focus on one of the aspects of being a peacemaker: respect, communication, listening, forgiving and living courageously. By living peacefully and making peace in our homes, at school and with our friends, peace begins with us and spreads like ripples in the water!

Great camp activities during the week include swimming, canoeing, archery, crafts, worship, wink and more!

Sunday - Saturday
July 19 - 25, 2009

rejoice in victory nor take delight in the downfall of others. Victory is an illusion and gains us nothing - Tao Te Ching

Buttles are not with "enemies" but with beings like ourselves. Knowing this, we do not

Weapons of violence are contrary to the common good, no matter how skillfully used. So we vow to do no harm...

PSWD Summer YoUuth Camps Registration Information

Submit registration with a \$75 non-refundable deposit. Balance due at check in.
No refunds after check-in

Cost - \$375

Deduct \$35 if registering before 4/30/2009

Elementary - Completing grades 2 - 6

Jr High - Completing grades 6 - 9

Sr High - Completing grades 9 - 12

Sibling Discount - \$15 (one per family)

T-Shirt \$12 **Sweatshirt** \$25

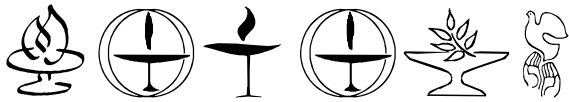
YRUU Sr High Camp * Sunday - Saturday * July 26 - August 1, 2009

CAMP UNDERGROUND

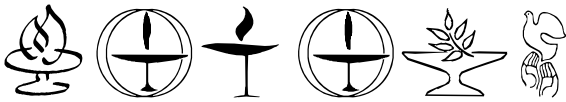
Grab Hold & Find Your Voice! Show them somebody will listen....

Learn how to find and utilize the tools found in truly alternative media. Discover how to express yourself, inform others, and help your community through sources like public access television, local movie theatres, independent journalism, alternative radio, and the fine arts.

Youth Deans: Ellie Chamberlain & Haley Weaver * **Adult Dean:** Kim St Clair



Trainings



YoUuth Counselors (CIT)

ages 15 - 18 Cost - \$210.00

Learn how to be as good as your favorite counselor at camp. Train each morning, then be part of Elementary Camp with hands on experience afternoons and evenings.

Request application by registering with a \$75 deposit. Return your application with 2 letters of recommendation by June 5, 2009. Acceptance letters will be sent after June 10, 2009

Faciliator: Kit Petrie

Sun - Sat * July 12 - 18, 2009

Adult Advisors

ages 25+ Cost - \$210.00

Excited about youth ministry? Gain practical skills and strengthen the faith basis for your work with youth---at camp and in your congregation. Train in the morning, work with campers the rest of the day, then wrap up with Vespers and reflection each evening. Bond with each other and the campers for a magical week at camp.

Faciliator: Kathe Larick

Sun - Sat * July 26 - August 1, 2009

YoUuth Leadership

completed grades 6 - 11

September 1 - 4, 2009

Challenge Yourself! Leadership Skills Development, Worship, Religious Values & Heritage. Deepen your UU faith while strengthening relationships with mentors and peers. An intense retreat for those who wish to become UU leaders.

Register at: <http://pswduua.org>



★ *Early Summer Weekend* ★

Friday, June 12 - Sunday, June 14, 2009

Enjoy the cool mountain air for a weekend getaway. Relaxed schedule, minimal programming. Read by the pool, soak in the hot tub, walk to the lake. Kayak and canoe or practice on the archery range. Tie dye or come by the crafts area. Play games in the evening. Great food and the cool mountain air. Nothing more is needed!

* **\$125 Adults** * **\$100 Teens** (13 - 18) * **\$80 Children** (3 - 12)

★ *Everyone Welcome* ★

*Have a Family Reunion * Relax with Friends * Take a Personal Holiday*



Summer Camp for Grownups!

Sunday - Friday ~ August 23 - 28, 2009

THEME SPEAKER: Rev. Jim VanderWeele
Community UU Church of New Orleans

"The Secret of Working Together in Times of Crisis"

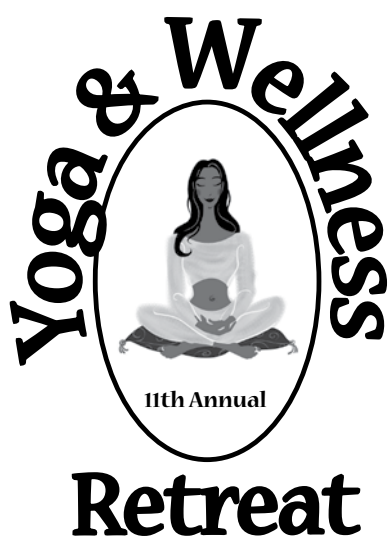
Theme Speaker, Nature walks, Guitar, Folk Dancing, Creative Writing, Qi Gong, Astronomy, Brain Education, Spirituality & Tarot, Dream Work, Journaling, swimming, hot tub, evening programs, music, social hour, Talent Show, videos, trip to Big Bear included.

NEW FOR THIS YEAR:

Add "[Landscape Photography](#)" for indepth instruction in digital photography or "[Kayaking & Hiking](#)" for daily explorations in the areas surrounding camp.

\$100 additional for supplies & instruction

Register at: <http://pswirl.org>



A weekend of yoga, relaxation and healing.

Beginning, intermediate and multi-level Yoga instruction.

Wellness workshops including acupuncture, archery, herbology & nutrition, massage, meditation, reiki, tai chi, and water yoga.

Hiking, canoeing/kayaking, swimming and the hot tub

Great food, including vegetarian & vegan options (please request with registration)

Begin fall refreshed, renewed & invigorated

Registration Fee: \$175 per person

All inclusive - food, lodging, classes & activities

Upgrades: +\$30

Craig's Cabin/Cabin 6

* **Thursday Arrival:** +\$20

Lodging Only

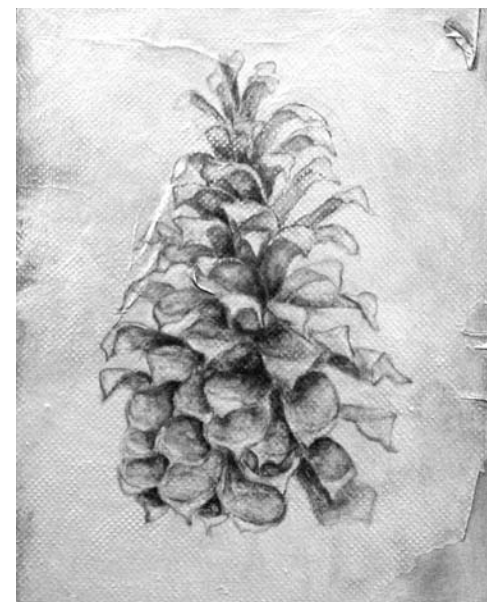
Cancellation Policy

\$75 per person before 8/10/2009

No refund after 8/10/2009

**Friday - Sunday
September 11 - 13, 2009**

DE BENNEVILLE PINES ART CAMP 2009



AUGUST 23-28, 2009

Cost: \$475.00

Includes food, lodging, program & art supplies

Cancellation Policy

\$75 fee per person before 8/10/2009

No refund after 8/10/2009



Your Help is Need!
Skilled and unskilled, everyone is welcome and appreciated (ages 11+ for safety)
Delicious food and comfortable accommodations are provided - **FREE!**

RSVP to
caroline@uucamp.org
or (909) 794-2928



Work Weekends

Friday - Sunday

May 8 - 10, 2009 & October 30 - November 1, 2009

Music in the Mountains

Friday - Sunday * November 6 - 8, 2009

Acoustic & Vocal Music Weekend - Sing, play, jam and dance, all day and into the night. Meet musicians and singers from all over So CA and beyond---new friends and great music!

Register Before September 15, 2009 for 2008 prices

\$98/adult * \$80/youth (ages 3 - 17)
\$35 additional for Craig's or Cabin 6

Thanksgiving Celebration

Thurs - Sunday * November 26 - 29, 2009

Our annual celebration for families, singles, couples and young adults. Workshops, activities, and special events. Great food....starting with a feast on Thursday evening. A long weekend of relaxing fun.

Register Before September 15, 2009 for 2008 prices

\$185/adult * \$135/youth (ages 3-17) * Arrive: Wed +\$20 * Friday -\$20
Craig's/Cabin 6 +\$35/adult * Double Bed in 5/7/8 +\$35/room

Register for any de Benneville sponsored event up to 12 months before by paying a \$75 per person, non-refundable deposit. Your payment in full will be required 30 days before the event.

Adult & Family Event Registration Form

Event Name:				Event Dates:				
Attendee Name	Special Diet, Allergies or Medical Needs	Adult=A or Child's DOB	Fee	Upgrade	Extra Day	Early Reg Discount	Donation	Total Due
								\$
								\$
								\$
								\$
Total enclosed/to be charged								\$
Address				Home Phone				
City & State				Cell Phone				
Zip	If you would like to receive confirmation that we have received your registration or if you would like to charge your fees, please include an e-mail address.			E-Mail				
Circle Requests:	Craig's Cabin	Cabin 6	Double Bed (upgrade may apply)	Bottom Bunk		Carpool (if available)		
Cabinmates:				Additional Information:				
UU Congregation								
To use a credit card, complete the following:			Expiration Date:		Security Code: 3 digits M/V/D or 4 digits AMEX			
Card#								

To pay by mail, return your registration form with a check to: Camp de Benneville Pines, 41750 Jenks Lake Rd West, Angelus Oaks, CA 92305
To pay via credit card, call, fax or e-mail registration information to: Phone (909) 794-2928 Fax (866) 481-2508 Email caroline@uucamp.org

PSWD YoUUtH Camp Registration Form

Camp Name:						Camp Dates:				
Attendee Name	Special Diet, Allergies or Medical Needs	Birth Date	Grade	M/F	Fee	Early Reg Discount	Sibling Disc (1 per family)	T-shirt \$12 Sweatshirt \$25	Scholarship Fund Donation	Total Due
										\$
										\$
										\$
If you have a special or high-needs child, please let us know. We will have someone contact you to determine the best way to support your child and the family.								Total enclosed/to be charged		\$
Parent's Name(s)										
Address						Home Phone				
City & State						Cell Phone				
Zip	If you would like to receive confirmation that we have received your registration or if you would like to charge your fees, please include an e-mail address.					E-Mail				
First Time Camper? Yes / No		Do you need a PSWD Scholarship? Yes / No				Scholarships are awarded on the basis of need and a camper's willingness to raise money for him/herself. Please send scholarship requests to Tera Little at teral@att.net or (626) 840-5412				
Cabinmates:						Additional Information: (shirt size, etc.)				
UU Congregation										
To use a credit card, complete the following:					Expiration Date:		Security Code: 3 digits M/V/D or 4 digits AMEX			
Card#										

Camp de Benneville Pines
Board of Directors
2008-2009

President
Glenn Noreen

Vice President
Tom Thorward

Secretary
Karen Quinn

Treasurer
Eric Klatt

Members at Large
Diane Lowrie
Rev John Morehouse
Dr Ross Quinn
Gil Speer
Joan Stredler

Camp Staff

Executive Director
Janet James
uucamp@aol.com

**Administrative Assistant
& Registrar**
Caroline Quintanilla
caroline@uucamp.org

Lead Cook
Marvin Gardenhire

Maintenance Supervisor
James Berry

Our Mission:

The mission of Camp de Benneville Pines is to provide a mountain retreat where Unitarian Universalist principles and values are lived and celebrated in community.

Camp Purpose

- To provide a place to relax and recreate in life-affirming ways
- To provide a central gathering place for the Pacific Southwest District
- To provide a place for promoting life-long spiritual growth
- To develop leaders through volunteer opportunities/experiences
- To conserve a wilderness setting
- To extend UU influence in the larger community
- To encourage the expression of diverse ideas in a safe atmosphere of mutual respect
- To facilitate the ongoing process of community building within and among UU societies

Design by Caroline Quintanilla

Photos & Art by

David Dopps - p 1,4,7
Laura Janes - p 6
John Keasler - p 3
Steven Rachwal - p 1, 3
Michael Sallwasser - p 4
PSWIRL - p 1, 6



This facility is operated under a Special Use permit on land under the jurisdiction of the US Department of Agriculture, Forest Service. The United States Department of Agriculture (USDA) prohibits discrimination in all its programs and activities on the basis of race, color, national origin, gender, religion, age, disability, political beliefs, sexual orientation, and marital or familial status.

Unitarian Universalist Principles and Purposes

We, the member congregations of the Unitarian Universalist Association, covenant to affirm and promote:

- The inherent worth and dignity of every person;
- Justice, equity, and compassion in human relations;
- Acceptance of one another and encouragement to spiritual growth in our congregations;
- A free and responsible search for truth and meaning;
- The right of conscience and the use of the democratic process within our congregations and in society at large;
- The goal of world community with peace, liberty, and justice for all;
- Respect for the interdependent web of all existence of which we are a part.

The living tradition we share draws from many sources:

- Direct experience of that transcending mystery and wonder, affirmed in all cultures, which moves us to a renewal of the spirit and an openness to the forces that create and uphold life;
- Words and deeds of prophetic women and men which challenge us to confront powers and structures of evil with justice, compassion, and the transforming power of love;
- Wisdom from the world's religions which inspires us in our ethical and spiritual life;
- Jewish and Christian teaching which call us to respond to God's love by loving our neighbors as ourselves;
- Humanist teachings which counsel us to heed the guidance of reason and the results of science, and warn us against idolaters of the mind and spirit;
- Spiritual teachings of Earth-centered traditions which celebrate the sacred circle of life and instruct us to live in harmony with the rhythms of nature.

How to Contact Us

Camp de Benneville Pines
41750 Jenks Lake Rd W
Angelus Oaks, CA 92305

Office & Group Reservations
909-794-2928 (phone)
909-794-2418 (fax)
uucamp@aol.com (email)

Lodge/Kitchen
909-794-8712

Maintenance Shop
909-794-4530

Event Registration
909-794-1252 (phone)
866-481-2805 (fax)
caroline@uucamp.org (email)

Camp Website
www.uucamp.org

Camp Wish List

End Tables, Night Stands &
Dressers (not pressboard)

Mirrors

Office Supplies

Craft Supplies

Small Pickup Truck
(working condition)

Power Tools

Picnic Tables

Ping Pong Tables

Sports Equipment

Board Games